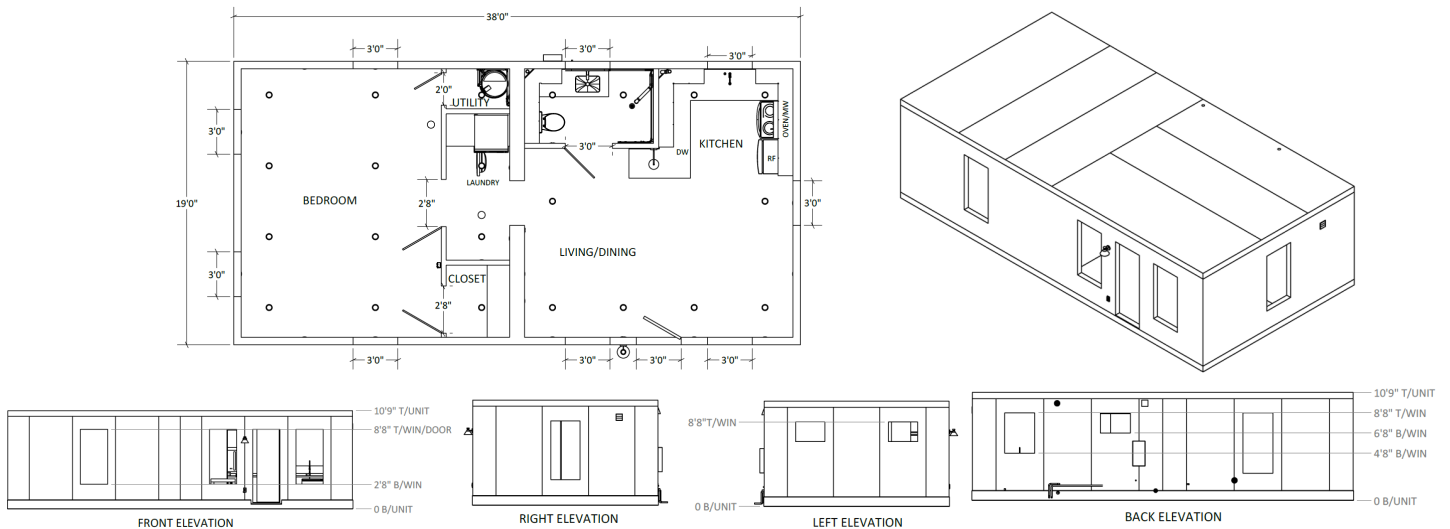


# BOXABL

## 1-BED 1-BATH CASITA

Model: BXB-000017



### Description:

Factory Built 1-Bed 1-Bath Single Family Home constructed with BOXABL SIP Panels. Folding panel construction for ease of transport and minimal site setup. Multi-Module 1-Bed room, living, kitchen configured floor plan with bath & kitchen with generous living accommodations. Specifications are approximate; some details may change.

#### Envelope

- 6" Exterior Wall Assembly – R=23.47
- 7.125" Floor Assembly – R=28.3
- 7.125" Ceiling Assembly – R=27.68
- Some climate zones may require additional roof insulation see model plan set

#### Structural Overview

- 40 psf Floor Live Load Rating
- 20 psf Roof Live Load Rating (flat roof)
- Up to 100 psf Ground Snow Rating with Truss Roof
- Seismic Design Category: D
- 140/120 Mph Wind Speed EXP B/C
- All design criteria are generic, see plans for further site criteria allowances

#### Dimension

- 2 x 19' x 19' Building Envelope w/ 9'6" Ceiling Height
- 8'6"W x 19' L x 12'4" H Shipping Size Each
- 13,000 Lbs Weight Each

### Features:

- Energy efficient thermally broken envelope for high performance in all climate zones
- Factory complete structure with electrical, plumbing, HVAC pre-installed with minor on-site connections & setup
- 18,000 BTU Ducted Heating & Air Conditioning System
- Low voltage LED down lighting with LED pendant light over breakfast bar & exterior sconce lighting
- Full Bath with generous shower, vanity, LED back-lit mirror
- Complete Laundry center with stacked washer & dryer and cabinetry
- Complete kitchen with factory installed cabinetry, countertops & double sink
- Complete 1-bedroom with walk-in closet
- Full-size stainless-steel appliances including refrigerator, microwave, range, dishwasher & heat pump water heater
- Generous 8' tall factory installed double pane low-e windows and solid exterior doors
- Luxury composite wide-plank flooring
- All interior & exterior trim included

### Installation Requirements/Responsibilities:

- Site condition validation: Validate site conditions are within allowable values per pre-approved plan sets. Sites with extreme wind/seismic/snow OR in flood plane region/ steep grade may require site specific foundation & roof design
- Site preparation including foundation, utility preparation
- Site plan & local permitting approval including foundation, utility connection details, setbacks, easements, & roof design
- Crane/Telehandler Forklift for unit delivery & unfolding
- Unfolding of unit(s) including structural & electrical connections between exterior wall, floor & ceiling panels & between modules & foundation
- Structural & utility connections of unit to site including foundation & roof installation
- Installation of heat pump water heater & outdoor HVAC Unit (factory provided)
- Finish work of unit per installation manual including exterior sealing of panel joints, trim, interior trim, flooring installation miscellaneous cabinetry, finishing touch-up & electrical device installation (all materials provided inside unit)