

## 2

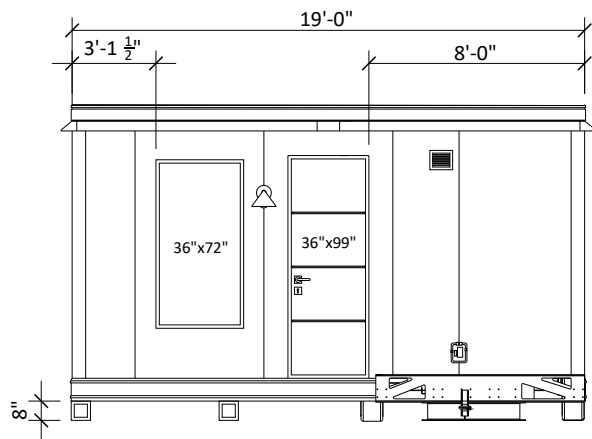


1

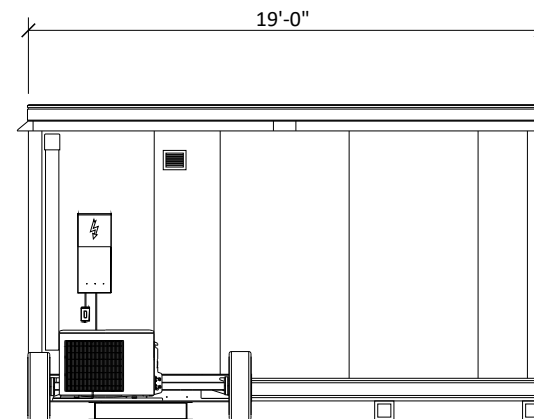


A

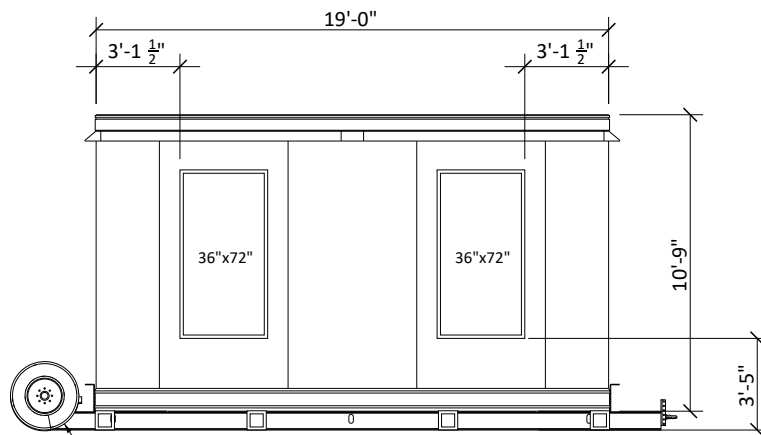




FRONT SIDE VIEW

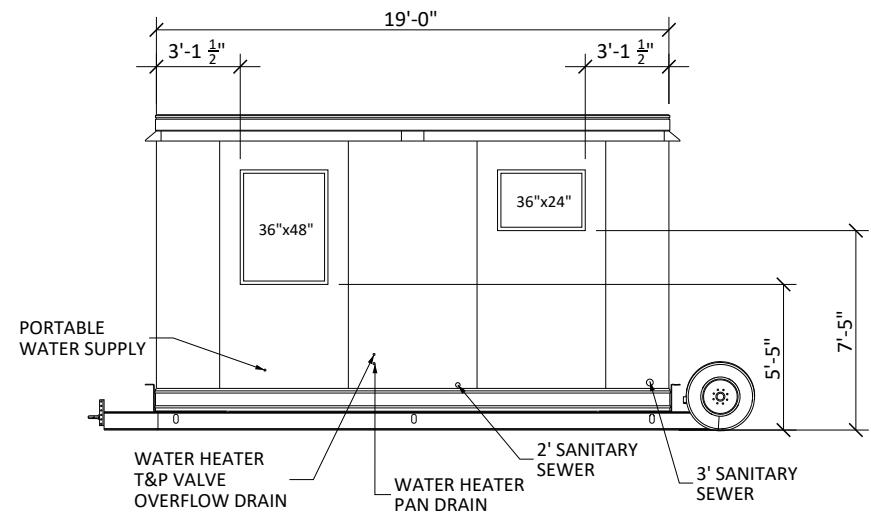


BACK SIDE VIEW



LOWER HOUSE BY LOOSENING AXLE U-BOLTS UNTIL THE TRAILER FRAME RESTS ON THE GROUND

LEFT SIDE VIEW



RIGHT SIDE VIEW

NOTES:

REVISION:  
UNITS: IN  
SHEET FORMAT: ANSI A  
SHEET SCALE: 1/4" = 1'-0"  
CREATED BY:  
RELEASE DATE:

SHEET: 2 OF 3

MODEL:  
Front Door Studio Casita PMRV

MODEL #: BXB-000006

BOXABL INC.

5345 EAST NORTH BELT ROAD  
NORTH LAS VEGAS, NV 89115, USA

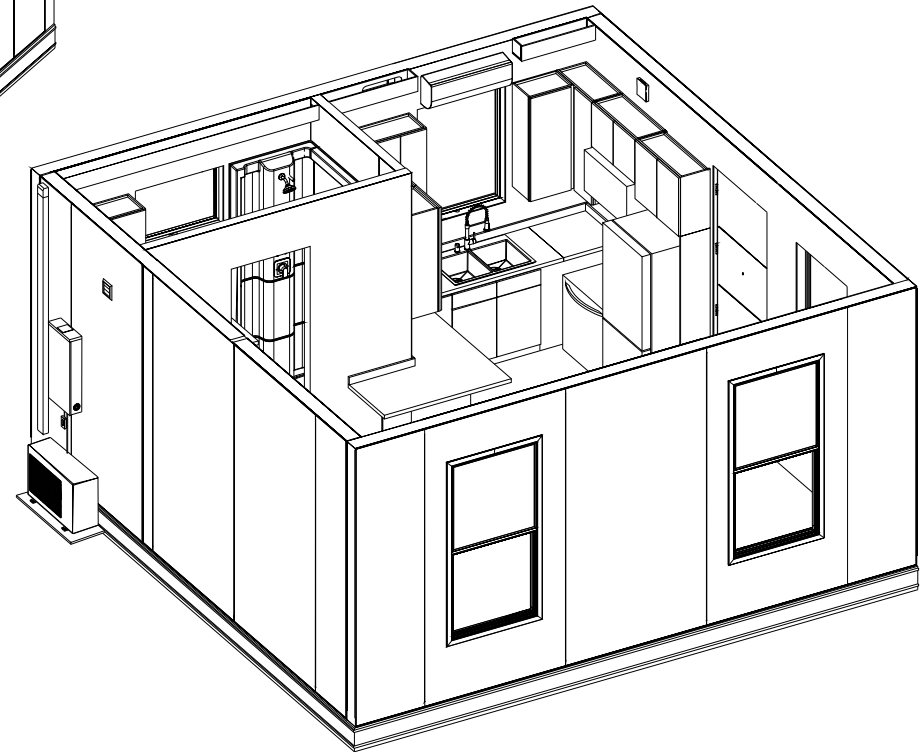
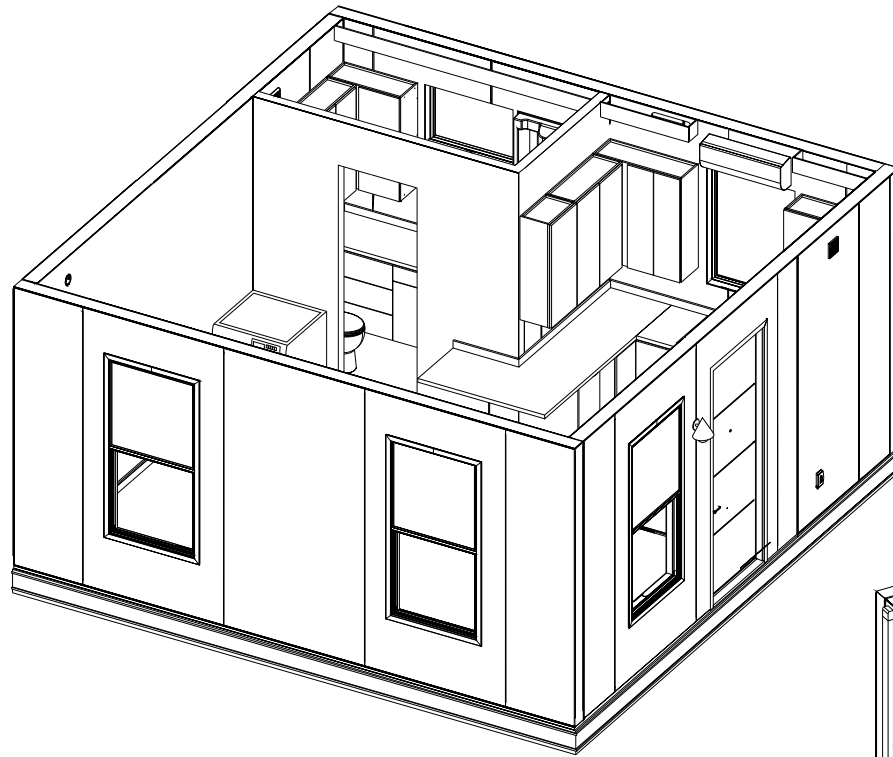
+1(702) 500-9000 HELLO@BOXABL.COM

**PROPRIETARY AND CONFIDENTIAL**  
THE INFORMATION CONTAINED IN THIS DRAWING IS THE SOLE PROPERTY OF BOXABL INC. ANY REPRODUCTION IN PART OR AS A WHOLE WITHOUT THE WRITTEN PERMISSION OF BOXABL INC. IS PROHIBITED.



2

1



NOTES:

REVISION:  
UNITS: IN  
SHEET FORMAT: ANSI A  
SHEET SCALE: 1/4" = 1'-0"  
CREATED BY:  
RELEASE DATE:

SHEET: 3 OF 3

MODEL:  
Front Door Studio Casita PMRV

MODEL #: BXB-000006

BOXABL INC.

5345 EAST NORTH BELT ROAD  
NORTH LAS VEGAS, NV 89115, USA

+1(702) 500-9000 HELLO@BOXABL.COM

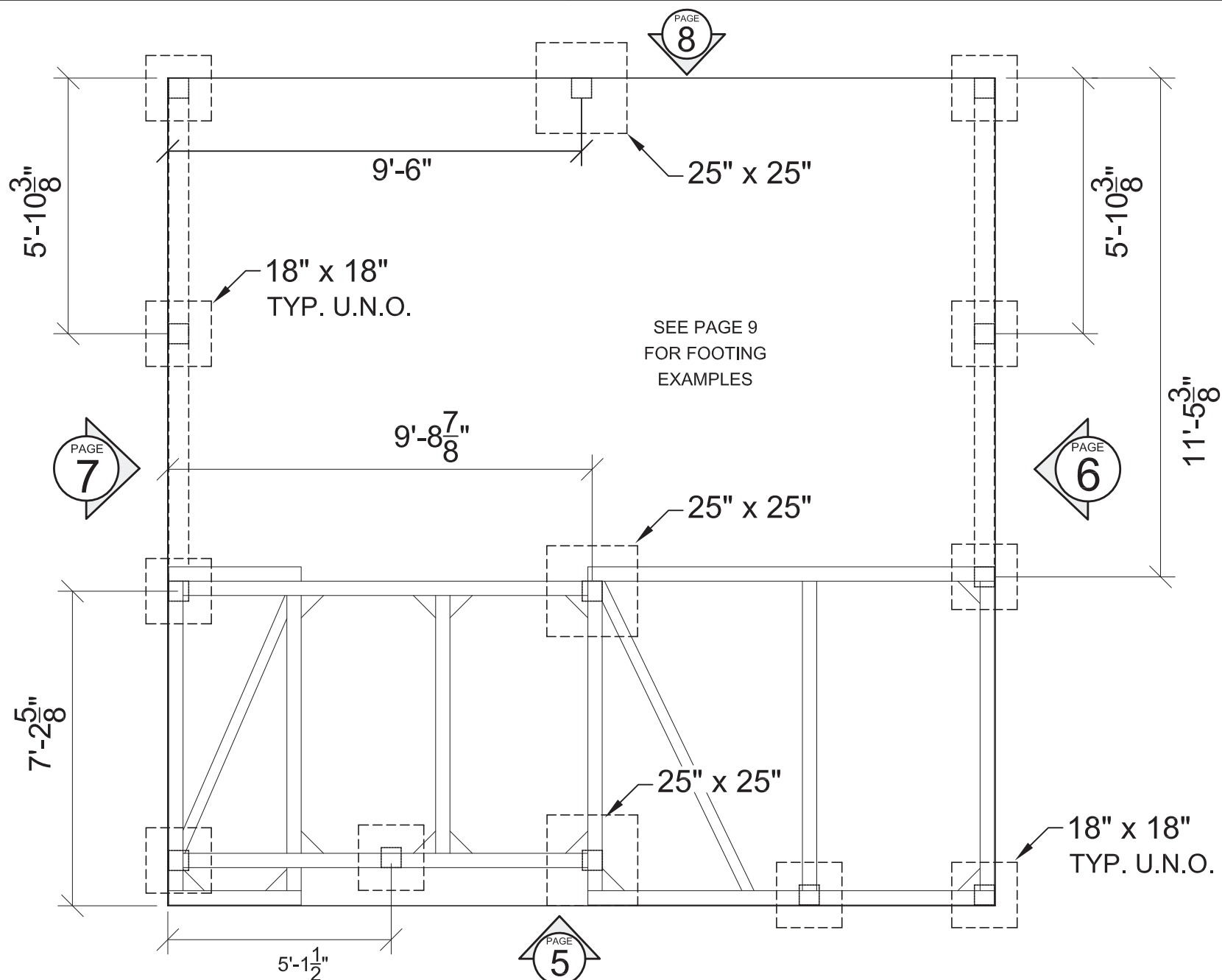
**PROPRIETARY AND CONFIDENTIAL**

THE INFORMATION CONTAINED IN THIS DRAWING IS THE SOLE  
PROPERTY OF BOXABL INC. ANY REPRODUCTION IN PART OR AS A  
WHOLE WITHOUT THE WRITTEN PERMISSION OF BOXABL INC. IS  
PROHIBITED.



2

1




NOTES:

FOOTING PLAN

DESIGNED BY OTHERS, HAVING MINIMUM DIMENSIONS INDICATED. SEE PG 9 FOR EXAMPLES

REVISION:	MODEL:	BOXABL INC. 5345 EAST NORTH BELT ROAD NORTH LAS VEGAS, NV 89115, USA +1(702) 500-9000 HELLO@BOXABL.COM <b>PROPRIETARY AND CONFIDENTIAL</b> THE INFORMATION CONTAINED IN THIS DRAWING IS THE SOLE PROPERTY OF BOXABL INC. ANY REPRODUCTION IN PART OR AS A WHOLE WITHOUT THE WRITTEN PERMISSION OF BOXABL INC. IS PROHIBITED.
UNITS: IN	Front Door Studio Casita PMRV	
SHEET FORMAT: ANSI A	MODEL #: BXB-000006	
SHEET SCALE: NONE		
CREATED BY:		
RELEASE DATE:		
SHEET: 4 of 10		



2

1

**MAXIMUM ALLOWED  
WIND SPEED:**

115 mph (ULTIMATE)  
80 (NOMINAL)  
Exposure C  
or  
98 mph (ULTIMATE)  
89 mph (NOMINAL)  
Exposure B

TO DETERMINE ULTIMATE  
WIND SPEED GO TO:  
[www.asce7hazardtool.online](http://www.asce7hazardtool.online)

EXPOSURE B IS URBAN  
AND SUBURBAN AREAS,  
WOODED AREAS, OR  
OTHER TERRAIN w/  
NUMEROUS, CLOSELY  
SPACED OBSTRUCTIONS  
THAT HAVE A SIZE OF A  
SINGLE-FAMILY DWELLING.  
THESE CONDITIONS  
PREVAIL IN THE UPWIND  
DIRECTION FOR A  
DISTANCE GREATER THAN  
1,500 FT.

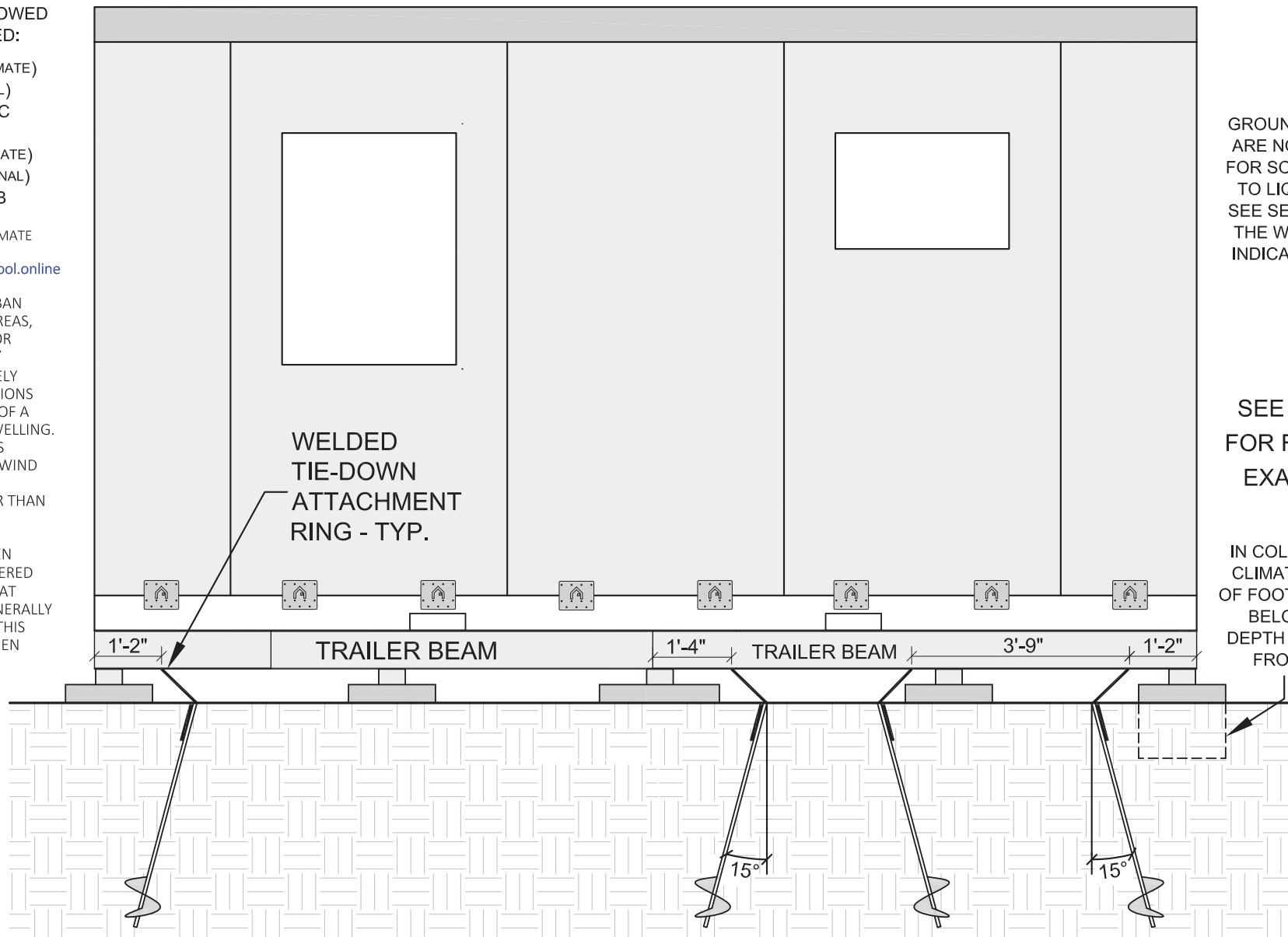
EXPOSURE C IS OPEN  
TERRAIN w/ SCATTERED  
OBSTRUCTIONS THAT  
HAVE HEIGHTS GENERALLY  
LESS THAN 30 FT. THIS  
INCLUDES FLAT, OPEN  
COUNTRY AND  
GRASSLANDS.

WELDED  
TIE-DOWN  
ATTACHMENT  
RING - TYP.

GROUND ANCHORS  
ARE NOT SUITABLE  
FOR SOILS SUBJECT  
TO LIQUIFACTION.  
SEE SECTION 7.4 AT  
THE WEBSITE LINK  
INDICATED BELOW.

SEE PAGE 9  
FOR FOOTING  
EXAMPLES

IN COLDER WINTER  
CLIMATES BOTTOM  
OF FOOTING TO DROP  
BELOW FROST  
DEPTH TO PREVENT  
FROST HEAVE



GROUND ANCHORS & CABLES DESIGNED & SUPPLIED BY OTHERS TO RESIST 1,550 lb OF CABLE TENSION.  
FOR INFO ON APPROPRIATE ANCHORS SEE [CHAPTER 7](http://www.fema.gov/sites/default/files/2020-08/fema_p85.pdf) AT: [www.fema.gov/sites/default/files/2020-08/fema\\_p85.pdf](http://www.fema.gov/sites/default/files/2020-08/fema_p85.pdf)

**NOTES:**



FIELD INSTALLED BOXABL PLATES



FACTORY INSTALLED BOXABL PLATES

REVISION:	
UNITS:	IN
SHEET FORMAT:	ANSI A
SHEET SCALE:	NONE
CREATED BY:	
RELEASE DATE:	
SHEET:	5 of 10

**MODEL:**  
Front Door Studio Casita PMRV  
**MODEL #:** BXB-000006

**BOXABL INC.**  
5345 EAST NORTH BELT ROAD  
NORTH LAS VEGAS, NV 89115, USA  
+1(702) 500-9000 HELLO@BOXABL.COM

**PROPRIETARY AND CONFIDENTIAL**  
THE INFORMATION CONTAINED IN THIS DRAWING IS THE SOLE  
PROPERTY OF BOXABL INC. ANY REPRODUCTION IN PART OR AS A  
WHOLE WITHOUT THE WRITTEN PERMISSION OF BOXABL INC. IS  
PROHIBITED.



2

1

**MAXIMUM ALLOWED  
WIND SPEED:**

115 mph (ULTIMATE)  
80 (NOMINAL)  
Exposure C  
or  
98 mph (ULTIMATE)  
89 mph (NOMINAL)  
Exposure B

TO DETERMINE ULTIMATE  
WIND SPEED GO TO:  
[www.asce7hazardtool.online](http://www.asce7hazardtool.online)

EXPOSURE B IS URBAN  
AND SUBURBAN AREAS,  
WOODED AREAS, OR  
OTHER TERRAIN w/  
NUMEROUS, CLOSELY  
SPACED OBSTRUCTIONS  
THAT HAVE A SIZE OF A  
SINGLE-FAMILY DWELLING.  
THESE CONDITIONS  
PREVAIL IN THE UPWIND  
DIRECTION FOR A  
DISTANCE GREATER THAN  
1,500 FT.

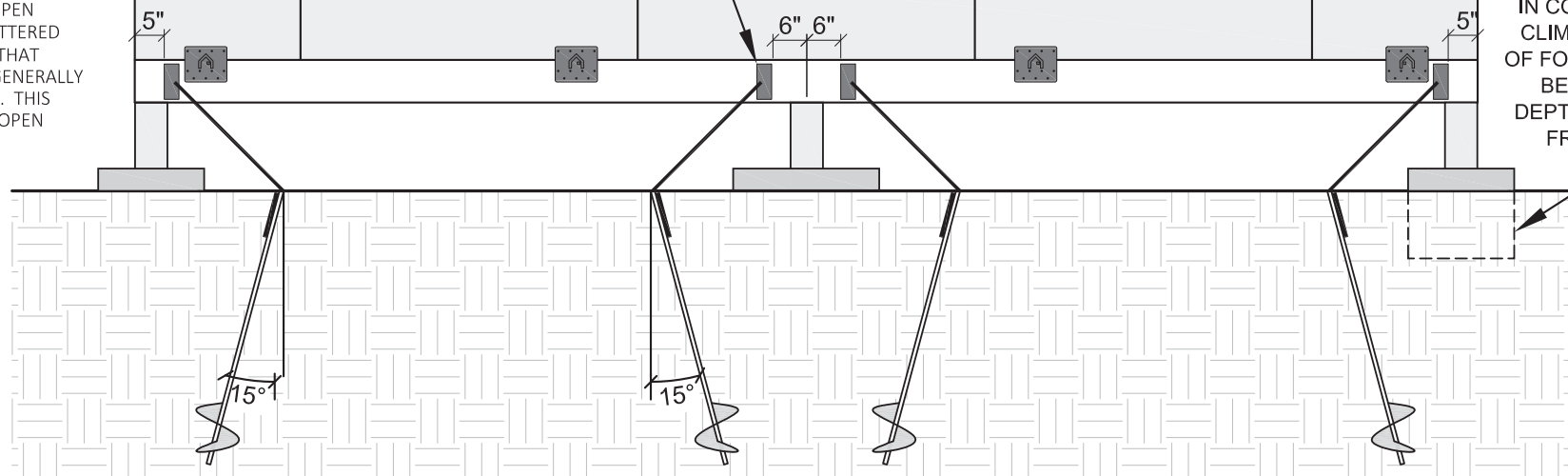
EXPOSURE C IS OPEN  
TERRAIN w/ SCATTERED  
OBSTRUCTIONS THAT  
HAVE HEIGHTS GENERALLY  
LESS THAN 30 FT. THIS  
INCLUDES FLAT, OPEN  
COUNTRY AND  
GRASSLANDS.

GROUND ANCHORS  
ARE NOT SUITABLE  
FOR SOILS SUBJECT  
TO LIQUIFACTION.  
SEE SECTION 7.4 AT  
THE WEBSITE LINK  
INDICATED BELOW.

SEE PAGE 9  
FOR FOOTING  
EXAMPLES

IN COLDER WINTER  
CLIMATES BOTTOM  
OF FOOTING TO DROP  
BELOW FROST  
DEPTH TO PREVENT  
FROST HEAVE

TIE-DOWN  
BRACKET  
PER PAGE 10



GROUND ANCHORS & CABLES DESIGNED & SUPPLIED BY OTHERS TO RESIST 1,550 lb OF CABLE TENSION.  
FOR INFO ON APPROPRIATE ANCHORS SEE [CHAPTER 7](http://www.fema.gov/sites/default/files/2020-08/fema_p85.pdf) AT: [www.fema.gov/sites/default/files/2020-08/fema\\_p85.pdf](http://www.fema.gov/sites/default/files/2020-08/fema_p85.pdf)

**NOTES:**



FIELD INSTALLED BOXABL PLATES

REVISION:	
UNITS:	IN
SHEET FORMAT:	ANSI A
SHEET SCALE:	NONE
CREATED BY:	
RELEASE DATE:	
SHEET:	6 of 10

**MODEL:**

Front Door Studio Casita PMRV

MODEL #: BXB-000006

**BOXABL INC.**

5345 EAST NORTH BELT ROAD  
NORTH LAS VEGAS, NV 89115, USA

+1(702) 500-9000 HELLO@BOXABL.COM

**PROPRIETARY AND CONFIDENTIAL**  
THE INFORMATION CONTAINED IN THIS DRAWING IS THE SOLE  
PROPERTY OF BOXABL INC. ANY REPRODUCTION IN PART OR AS A  
WHOLE WITHOUT THE WRITTEN PERMISSION OF BOXABL INC. IS  
PROHIBITED.



**MAXIMUM ALLOWED  
WIND SPEED:**

115 mph (ULTIMATE)  
80 (NOMINAL)  
Exposure C  
or  
98 mph (ULTIMATE)  
89 mph (NOMINAL)  
Exposure B

TO DETERMINE ULTIMATE  
WIND SPEED GO TO:  
[www.asce7hazardtool.online](http://www.asce7hazardtool.online)

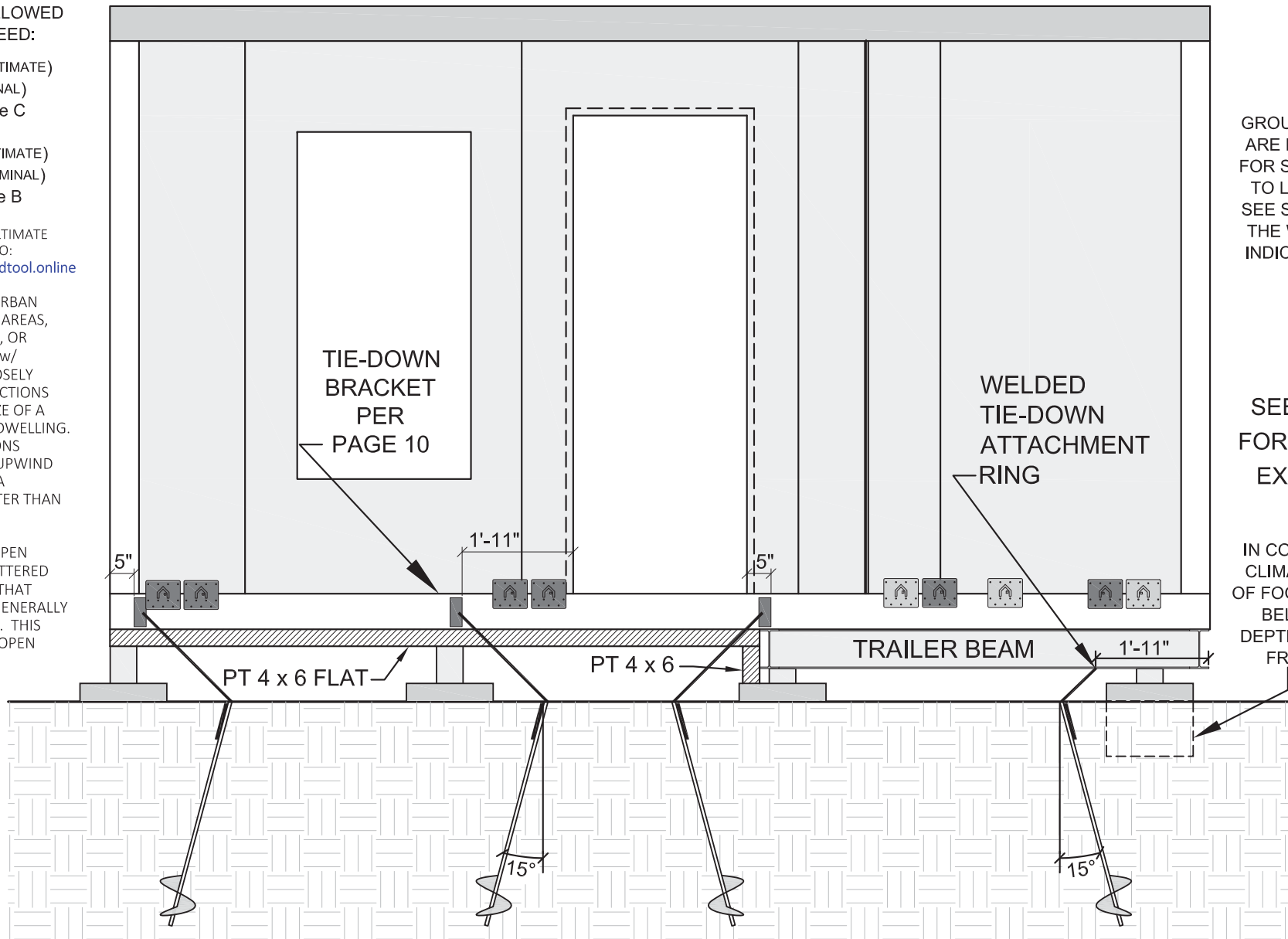
EXPOSURE B IS URBAN  
AND SUBURBAN AREAS,  
WOODED AREAS, OR  
OTHER TERRAIN w/  
NUMEROUS, CLOSELY  
SPACED OBSTRUCTIONS  
THAT HAVE A SIZE OF A  
SINGLE-FAMILY DWELLING.  
THESE CONDITIONS  
PREVAIL IN THE UPWIND  
DIRECTION FOR A  
DISTANCE GREATER THAN  
1,500 FT.

EXPOSURE C IS OPEN  
TERRAIN w/ SCATTERED  
OBSTRUCTIONS THAT  
HAVE HEIGHTS GENERALLY  
LESS THAN 30 FT. THIS  
INCLUDES FLAT, OPEN  
COUNTRY AND  
GRASSLANDS.

GROUND ANCHORS  
ARE NOT SUITABLE  
FOR SOILS SUBJECT  
TO LIQUIFICATION.  
SEE SECTION 7.4 AT  
THE WEBSITE LINK  
INDICATED BELOW.

SEE PAGE 9  
FOR FOOTING  
EXAMPLES

IN COLDER WINTER  
CLIMATES BOTTOM  
OF FOOTING TO DROP  
BELOW FROST  
DEPTH TO PREVENT  
FROST HEAVE



GROUND ANCHORS & CABLES DESIGNED & SUPPLIED BY OTHERS TO RESIST 1,550 lb OF CABLE TENSION.  
FOR INFO ON APPROPRIATE ANCHORS SEE [CHAPTER 7](http://www.fema.gov/sites/default/files/2020-08/fema_p85.pdf) AT: [www.fema.gov/sites/default/files/2020-08/fema\\_p85.pdf](http://www.fema.gov/sites/default/files/2020-08/fema_p85.pdf)

**NOTES:**



FIELD INSTALLED BOXABL PLATES



FACTORY INSTALLED BOXABL PLATES

REVISION:	
UNITS:	IN
SHEET FORMAT:	ANSI A
SHEET SCALE:	NONE
CREATED BY:	
RELEASE DATE:	
SHEET:	7 of 10

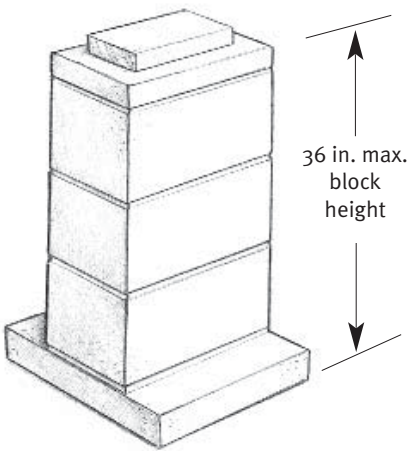
**MODEL:**  
Front Door Studio Casita PMRV  
**MODEL #:** BXB-000006

**BOXABL INC.**  
5345 EAST NORTH BELT ROAD  
NORTH LAS VEGAS, NV 89115, USA  
+1(702) 500-9000 HELLO@BOXABL.COM

**PROPRIETARY AND CONFIDENTIAL**  
THE INFORMATION CONTAINED IN THIS DRAWING IS THE SOLE  
PROPERTY OF BOXABL INC. ANY REPRODUCTION IN PART OR AS A  
WHOLE WITHOUT THE WRITTEN PERMISSION OF BOXABL INC. IS  
PROHIBITED.



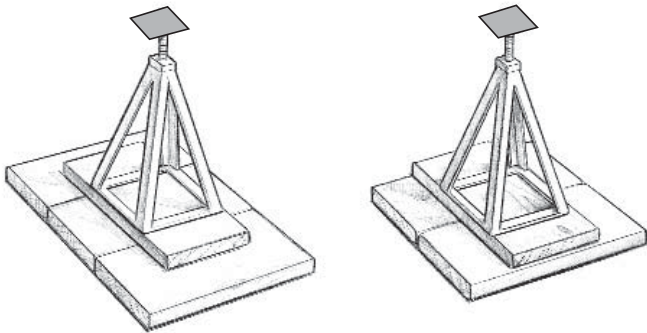
Piers set on square footers or pads on the ground spread the load from a pier over a larger area, making a more stable base. The square pad footers may be concrete, either poured in place or precast, preservative-treated wood, acrylonitrile butadiene styrene (ABS), or other materials approved by the local building authority. The spacing of the piers and the allowable bearing capacity of the soil determine the size of the footer or pad. The piers are typically spaced from 5–10 ft apart depending on home design, local soil characteristics, and roof snow load.



SINGLE BLOCK PIER

**Figure 3.3.** Common configuration of concrete block piers.

The allowable bearing capacity of the soil is a measure of its strength and ability to carry the weight of the pier without settling or compressing. Soil bearing capacity, measured by a penetrometer or other methods and expressed in units of pounds per square foot, is generally classified in the range of 1500–4500 psf soil (see Characteristics of major soil types on page 2.2).



**Figure 3.4.** Triple and double pad footings.

Pads for piers should be set on compacted or undisturbed (not loosened by digging or plowing) soil. Organic or loose matter, such as weeds, trash, and other objects, must be cleared away and then the area for the pad scraped until solid, undisturbed soil is exposed. If this is not done, uneven settlement can occur.

NOTES:

# FOOTING OPTIONS

DESIGNED BY OTHERS HAVING MINIMUM  
DIMENSIONS INDICATED ON SHEET 4

REVISION:	
UNITS:	IN
SHEET FORMAT:	ANSI A
SHEET SCALE:	NONE
CREATED BY:	
RELEASE DATE:	
SHEET:	9 of 10

MODEL:	Front Door Studio Casita PMRV	BOXABL INC.
		5345 EAST NORTH BELT ROAD NORTH LAS VEGAS, NV 89115, USA
MODEL #:	BXB-000006	+1(702) 500-9000 HELLO@BOXABL.COM
		PROPRIETARY AND CONFIDENTIAL THE INFORMATION CONTAINED IN THIS DRAWING IS THE SOLE PROPERTY OF BOXABL INC. ANY REPRODUCTION IN PART OR AS A WHOLE WITHOUT THE WRITTEN PERMISSION OF BOXABL INC. IS PROHIBITED.

